

美式三维调节普通铰链

American type 3D adjustment normal hinge

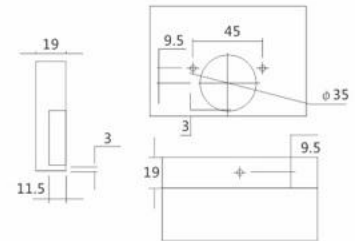
开启角度: 105°
 铰杯厚度: 11mm
 铰杯直径: 35mm
 面板尺寸 (K): 3mm
 门可选用板厚: 14-26mm
 表面处理: 镀镍

Opening angle: 105°
 Depth of hinge cup: 11mm
 Diameter of hinge cup: 35mm
 Drilling distances on door (K): 3mm
 Door thickness: 14-26mm
 Finish: Nickel plating

可配螺丝种类 Alternative screw types



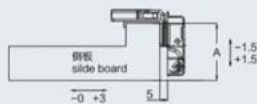
安装示意图
 Basic parameter



US3D1



1" 盖位=25.4
 overlay



杯距 Cup hole pitch	订货号 Item No.	包装 (pcs/box)
45mm	US3D1	300