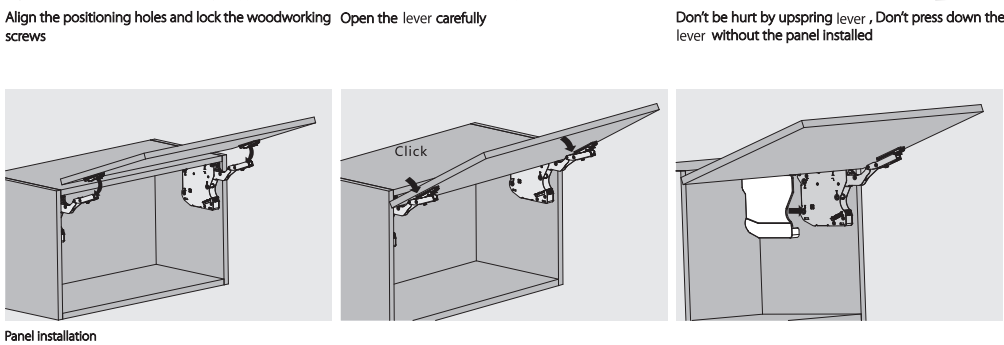
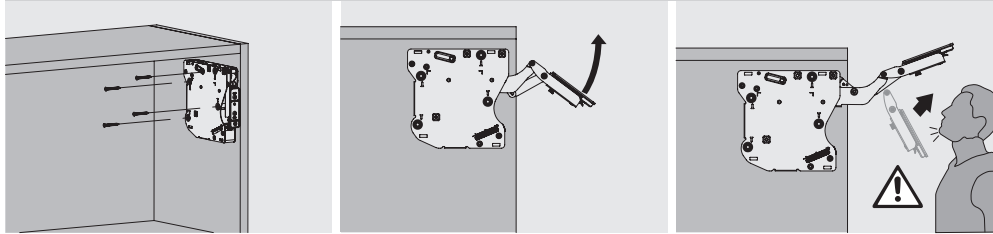


FREE STOP UPTURNING LIFT SYSTEM

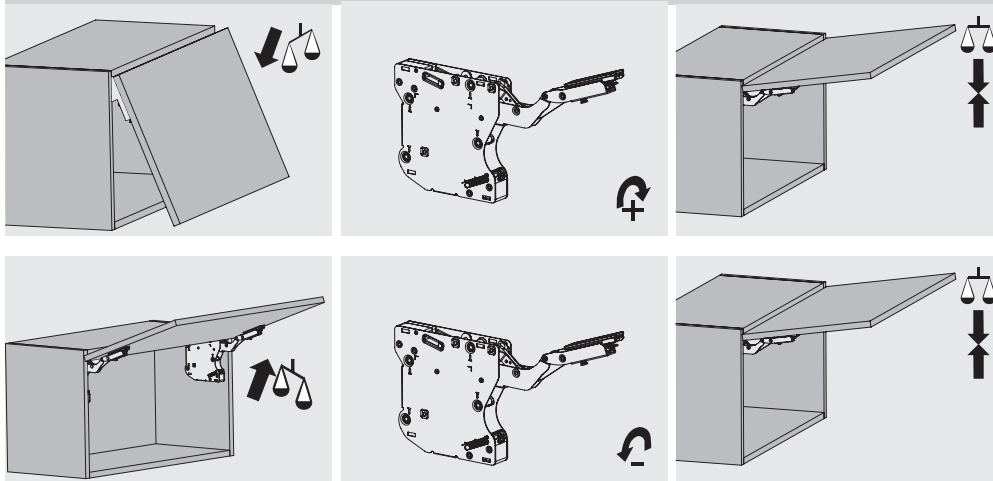
Installation adjustment

Installation, disassembly and adjustment (for upturning support)

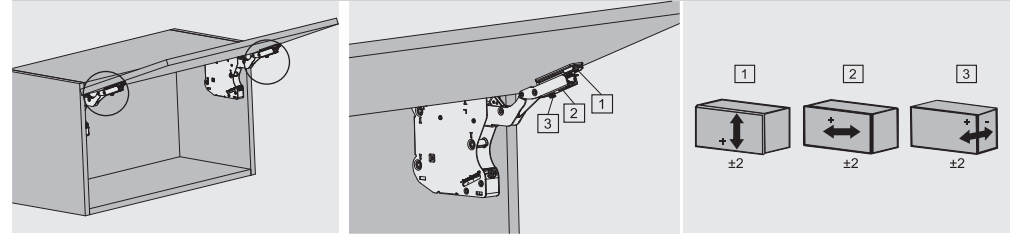
Installation instruction



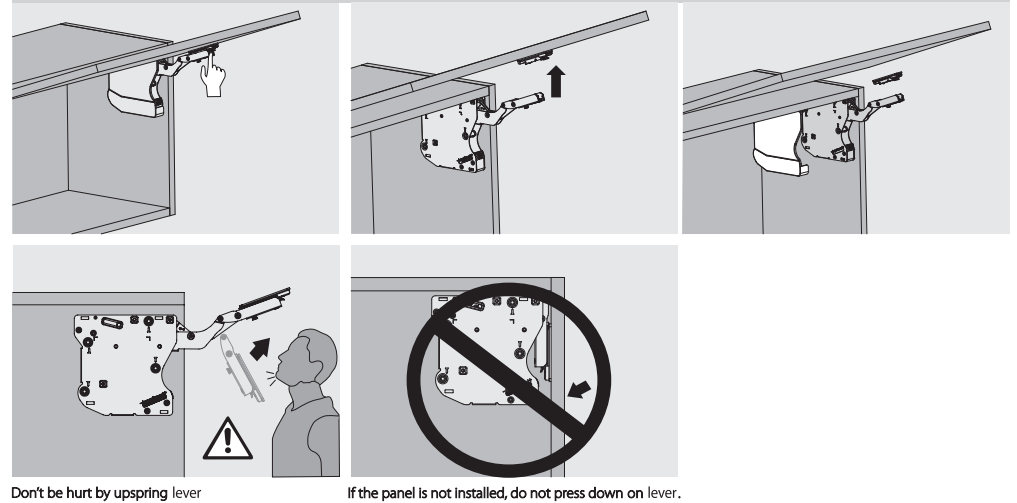
Hovering adjustment



3D adjustment of Panel



Disassembly



FREE STOP UPTURNING LIFT SYSTEM

Product Description

Material: Iron+Plastic

Finish: Nickel plating

Capacity: Light type 2.7-3.7 kg , Medium type 3.9-4.8 kg , Heavy type: 4.9-6.0kg

Cabinet Height: 300-500 mm

Cabinet Width: 600-1200 mm

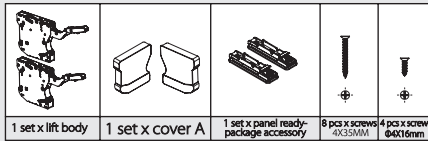
Panel Thickness: 16/19/22/26/28mm

3D adjustment for Panel: $\pm 2\text{mm}$ for up and down side, front and back side, left and right side

Suitable for upturning wooden door and aluminum-frame door

Product information

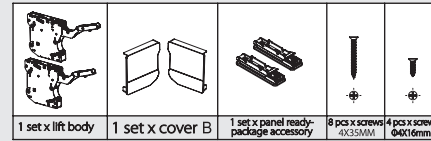
Lift body (left & right) / Opening angle: 110°



A cover (left & right) / Plastic

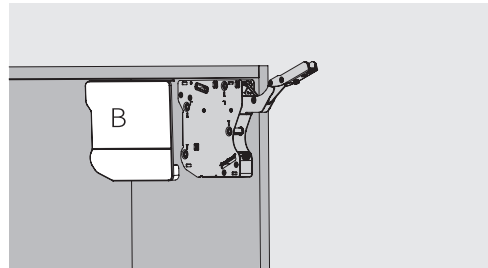
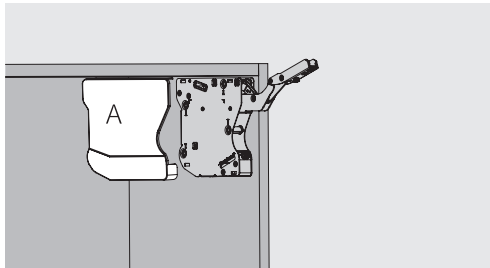
Colour	Order number
White	A-1
Gray	A-2

Lift body (left & right) / Opening angle: 110°



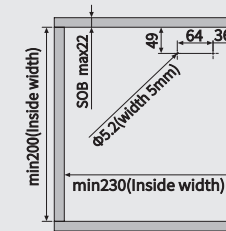
B cover (left & right) / Plastic

Colour	Order number
White	B-1
Gray	B-2



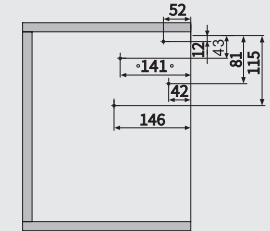
Installation size(mm)

Hole position and needed space



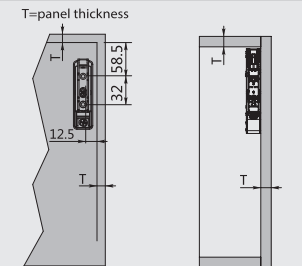
SOB panel thickness

fixed position



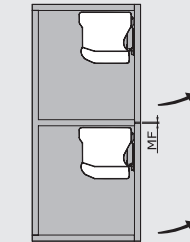
4 pcs x woodworking screws $\varnothing 4 \times 39\text{mm}$

Panel installation size



4 pcs x woodworking screws ($\varnothing 4 \times 16\text{mm}$) Use for fixing the aluminum panel
 $58.5 + T = \text{Total length}$ $12.5 + T = \text{Total length}$

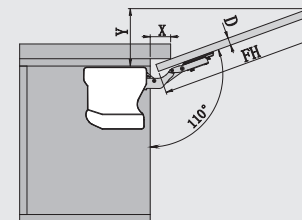
Minimum door gap



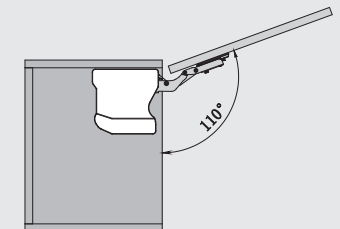
MF is 2 mm at opening

Space requirement

Situation 1



Situation 2



D (mm)	16	18	22	26	28
X (mm)	43	39	30	18	12
Y (mm)	$Y = FH \times 0.31 - 15 + D$				